

ALL SHS, RHS & CHS SECTIONS ARE GRADE S355JR UNLESS NOTED OTHERWISE.

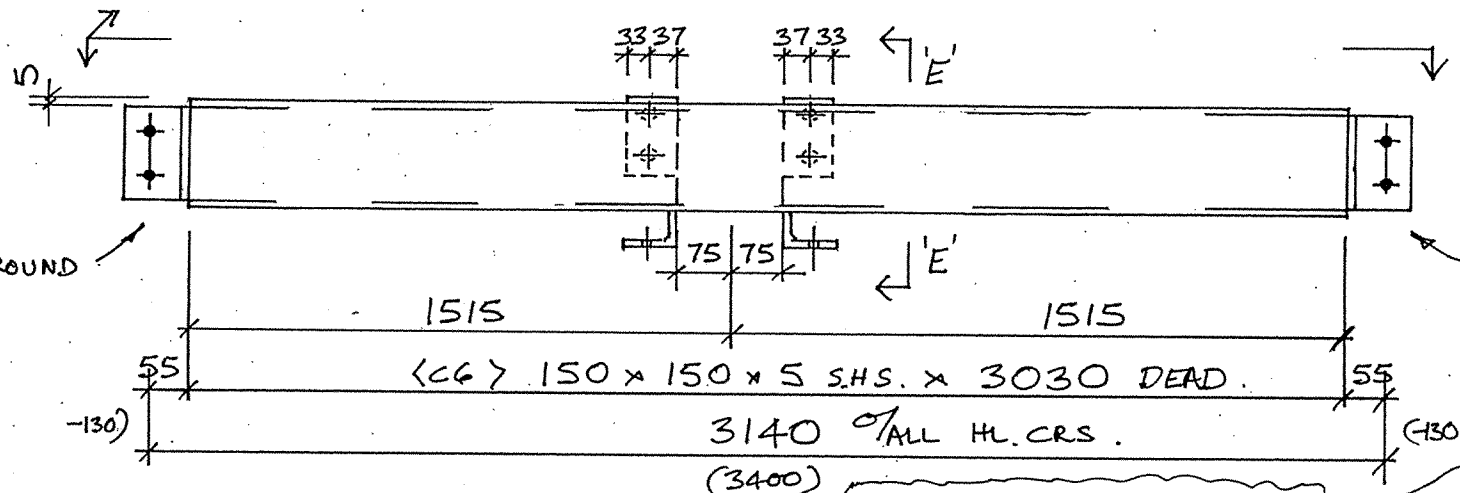
SITWORK, THIS STUB TO BE SHORTENED IN WORKS AS PER REV'D. DRAWING 07/18/67A

BKT 67/1
G.F.W. ALL ROUND

ANY/ALL SITE WELDING TO L.COOPER STEEL STRUCTURE MUST BE DONE USING LOW HYDROGEN WELDING RODS (SUITABLY DRIED IN AN OVEN) OR SIMILAR

BKT 67/2.
5 F.W. ALL ROUND

DETAIL A O E
BKT 67/2



SITWORK STUB REDUCED IN LENGTH TO 294. ALSO WELD EITHER SIDE 2N° TAB PLATES 202/1. G.F.W.

ONE N° REQ'D. THUS.

MKD 69/1

THIS WORK CARRIED OUT IN WORKS

VIEW 'E'-E'

LEONARD COOPER LIMITED

STRUCTURAL ENGINEERS
REGISTERED OFFICE
BALM ROAD, HUNSLET
LEEDS LS10 2JR
TEL: 0113 2705441
FAX: 0113 2760659
REGISTERED No.
167872 LONDON
sales@leonardcooperltd.co.uk
www.leonardcooperltd.co.uk

REVISION A.
REVISION B.
REVISION C.
REVISION D.
REVISION E.

ZONE 7

FABRICATION TOLERANCES
TO BS5950 PART 2 (U.N.O.)
(SHOWN ON L.C. PROCEDURE
MF5-23)

CONTRACT: QUARMBY CONSTRUCTION
WAKEFIELD WATERFRONT. BLDG 20

SHOP BOLTS 4.6
FINISH R.8
NO OFF TYPE DIA L'T N.F. R.F. H.F.

SHOP NOTES: (U.N.O.)
ALL WELDS 6mm CONT. FILLET WELDS
ALL STEEL TO BS EN 10025 GRADE S275JR
PAINT SHOT BLAST TO SA 2.5. 1 COAT
C400 V3 TO 80 MIC D.F.T.

TITLE EAVES BEAM.
RELEASED FOR FABRICATION/ERECTION
SCALE:
DRAWN BY: HLP
CHK'D BY: ISM
SIGNED: DATE:
DRG No: 07/18/SW19

